



EBDG series proportional pressure and flow control valves adopt two electrical loops to control pressure and flow of hydraulic system respectively. Using very small pressure drop to track load pressure and control the pump pressure, it is an energy-saving valve.

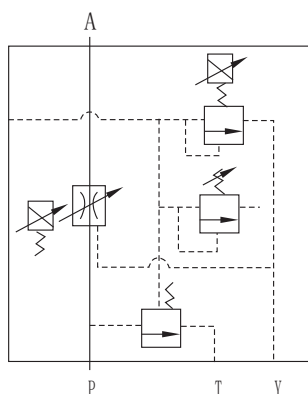
Ordering details

EBD	G	03	125	2	20
Sort	Mounting type	Nominal size	Max.flow	Pressure adjustment range	Design code
Proportional pressure and flow control valve	G:Subplate mounting	03:NG10 06:NG20	125l/min 250l/min	2:8~140bar 3:10~210bar	20

Technical specification

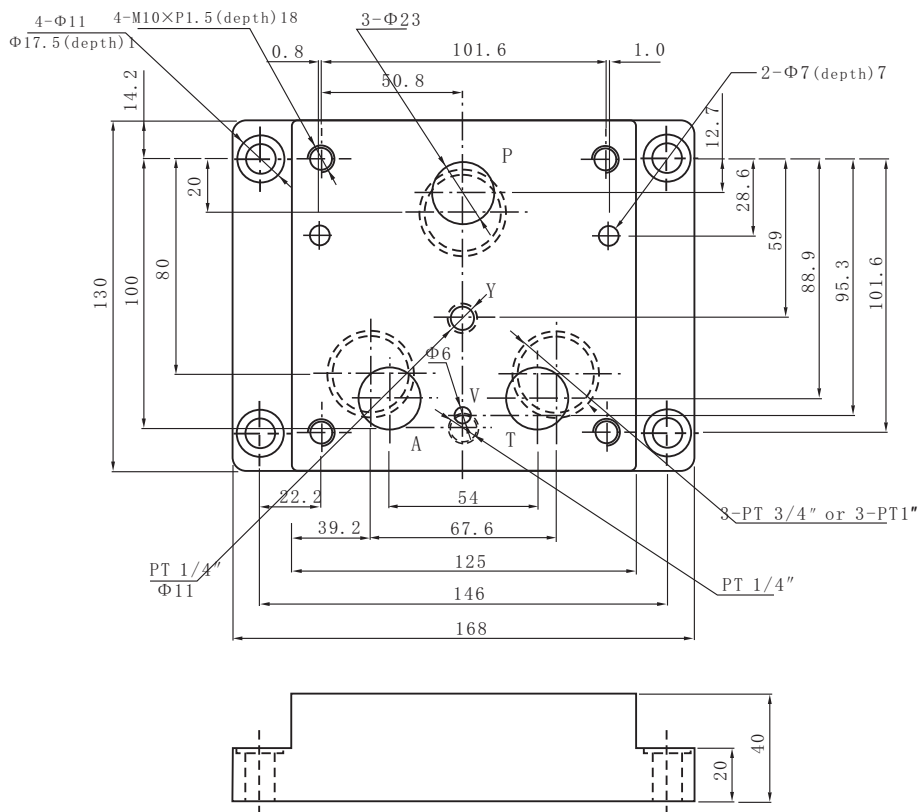
Model	EBD-G-03			EBD-G06		
Flow and pressure adjustment range	1-125l/min	8-140bar	10-210bar	1-250l/min	8-140bar	10-210bar
Rated current (mA)	750	780	820	750	780	820
Coil resistance (Ω)	40	10		40	10	
Hysteresis	<7%	<3%		<7%	<3%	
Repeatability	1%			1%		
Weight (kgs)	17.5			30		
Hydraulic fluid	Mineral oil					
Seal material	NBR seals					
Temperature range (°C)	-30 to +80					
Viscosity range (mm ² /s)	2.8 to 500					
Oil cleanliness class	ISO4406, class 20/18/15					

Symbol

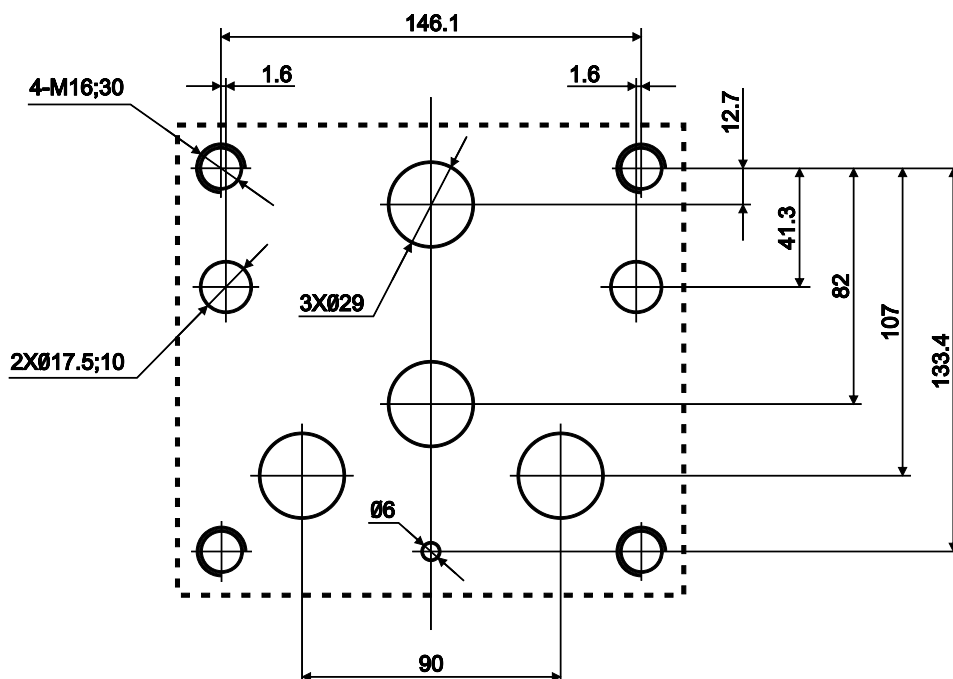


Mounting size

EBD-G-03 subplate installation dimensions



EBD-G06 subplate installation dimensions



Dimensions

Unit: mm

