

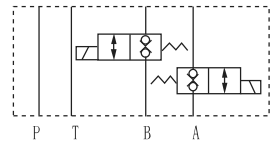
MSCC series modular solenoid operated two way check valves can use solenoid valve to make some oil ports flow through two way.



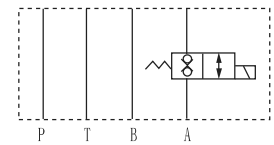
**Technical specification**

Model	MSCC-02	MSCC-03
Max.flow rate (l/min)	20	75
Internal leakage (ml/min)	≤ 0.25	
Working pressure (MPa)	21	25
Weight(kg s)	A, B	1.4
	W	1.7
		3
		3.4

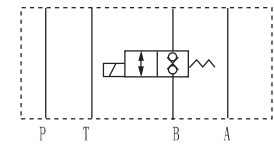
**Symbol list**



MSCC-W



MSCC-A



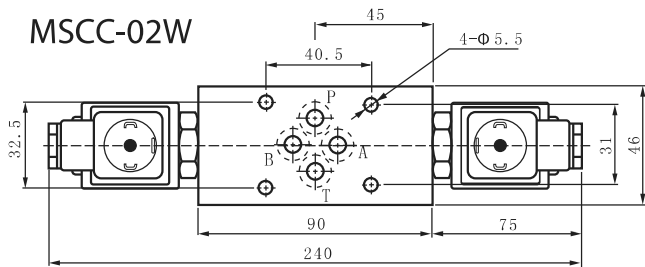
MSCC-B

**Ordering details**

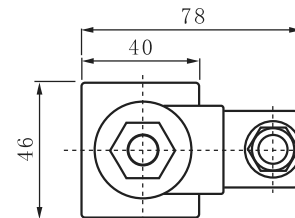
MSCC	02	A	A230	20
Sort	Nominal size	Pilot oil port	Input voltage	Design code
Modular solenoid operated two way check valve	02:NG6 Cetop3 03:NG10 Cetop5	A:A port B:B port W:A&B port	D12:DC12 D24:DC24 A115:AC115 A230:AC230	20

**Dimensions**

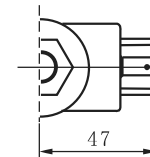
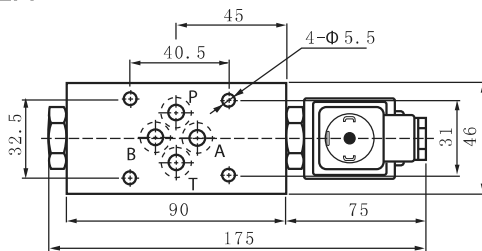
MSCC-02W



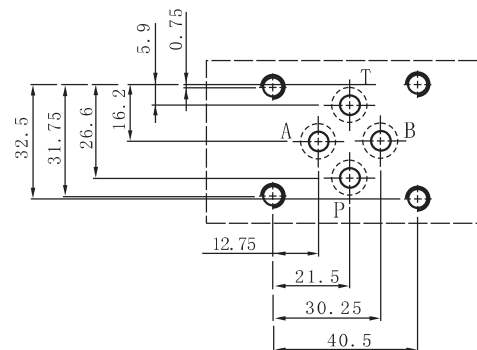
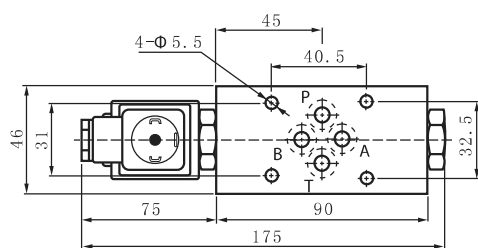
Unit: mm



MSCC-02A



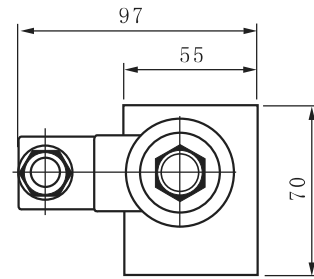
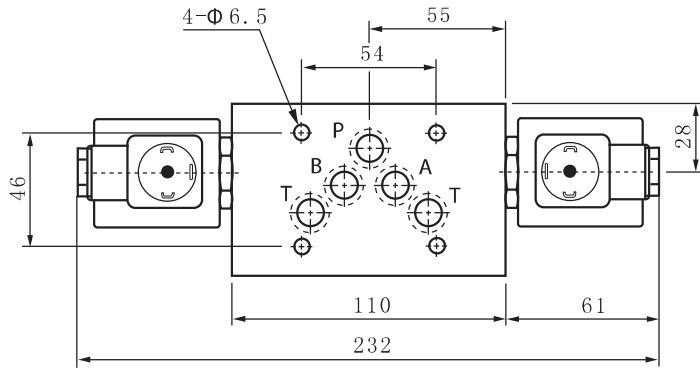
MSCC-02B



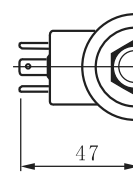
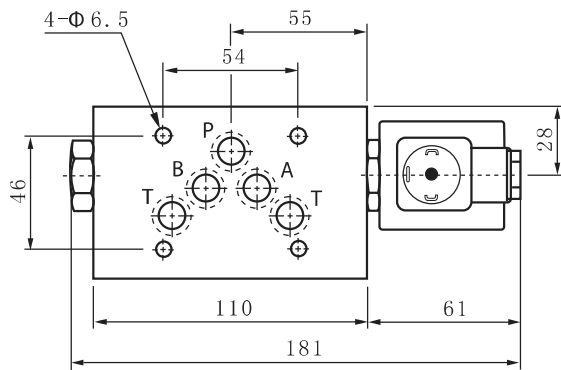
Dimensions

Unit: mm

MSCC-03W



MSCC-03A



MSCC-03B

