

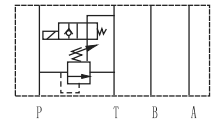
MSRV series modular solenoid operated relief valves can control flow for positive direction pass oil port. It not only can adjust flow by handle, but also use solenoid valve to control the station of relief valve.

**Technical specification**

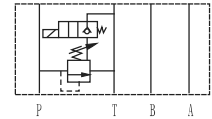


Model	MSRV-03
Max. flow rate (l/min)	70
Working pressure (MPa)	25
Weight(kgs)	3.6

**Symbol list**



MSR-03P-1PN



MSR-03P-1NP

**Ordering details**

MSRV	03	P	1PN	K	1	A230	20
Sort	Nominal size	Relief form	Normal state	Adjustment type	Pressure adjustment range	Input voltage	Design code
Modular solenoid operated relief valve	03:NG10 Cetop5	P:P→T	1PN:Normal open 1NP:Normal closed	No code: Without knob K: With plastic kob	1:8~70bar 2:35~140bar 3:70~250bar	D12:DC12 D24:DC24 A115:AC115 A230:AC230	20

**Dimensions**

Unit: mm

