



DA series pilot operated unloading valves and DBW series solenoid operated unloading valves are used to unload the oil pumps' pressure in a hydraulic system with accumulator. The valve allows high-pressure pump to operate and low-pressure pump to unload pressure.

Technical specification

Model	DA-10	DAW-10	DA-20	DAW-20	DA-30	DAW-30
Max. flow rate (l/min)	40		100		250	
Working pressure (MPa)	31.5					
Weight(kgs)	3.8	4.9	7.7	8.8	13.4	14.5

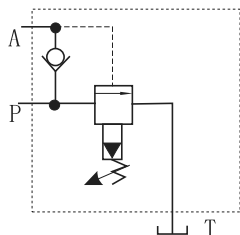
Ordering details

DA	W	10	A	1	30	80
Sort	With solenoid valve	Nominal size	Normal state	Adjustment type	Series number	Pressure adjustment range
Pilot operated unloading valve	No code: Without solenoid valve W: With solenoid valve	10:NG10 20:NG20 30:NG30	A:Normal closed B:Normal open	1:Rotary knob 2:Sleeve with hexagon and protective cap 3:Lockable rotary knob with scale	30:30 series	80:2~8MPa 160:8~16MPa 315:16~31.5MPa

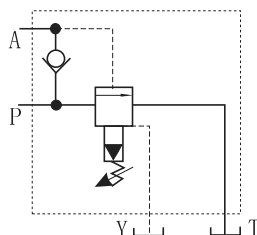
Y	G24	N	Z4L	V
Oil control	Input voltage	Manual override	Connector type	Seals
No code:Internal control internal drain Y:Internal control external drain	G24:DC24 W220:AC220	No code: Without manual override N: With manual override	Z4: Standart plug-in connector Z4L: Plug-in connector with light	No code: NBR seals for petroleum oils V: FPM seals for phosphate ester

Symbol list

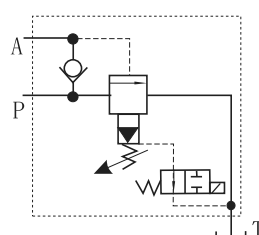
DA10/20/30



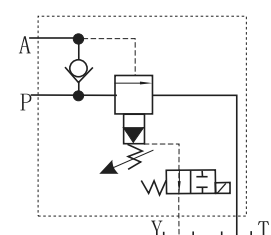
DA10/20/30...Y...



DAW10/20/30



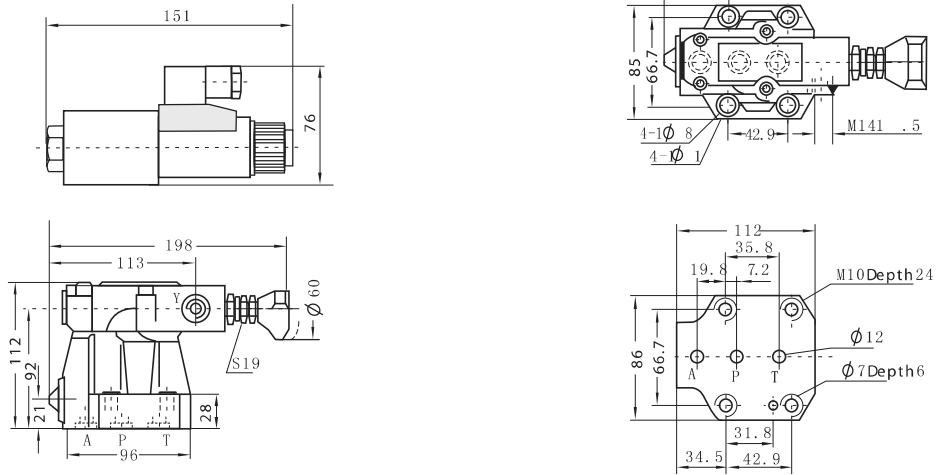
DAW10/20/30...Y...



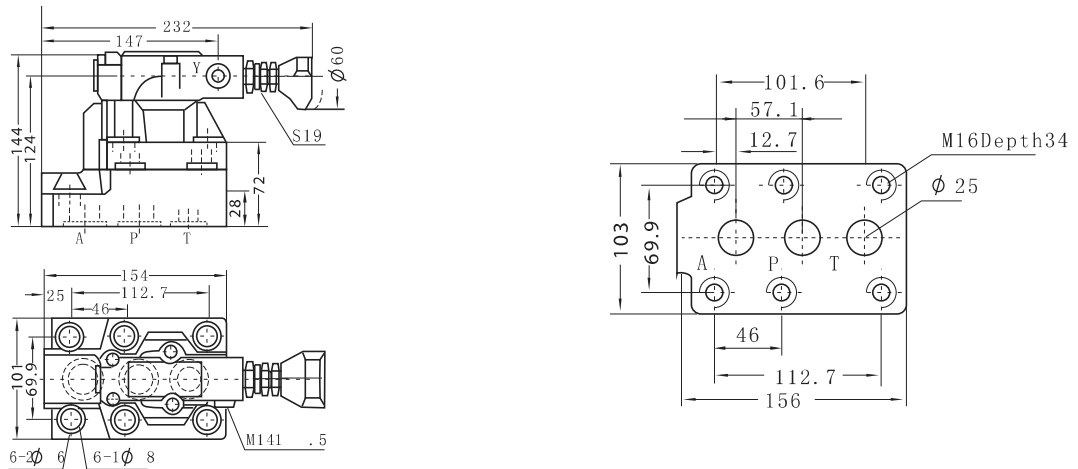
Dimensions

Unit: mm

DA/DAW-10



DA/DAW-20



DA/DAW-30

