

DR series pilot operated pressure reducing valves are pilot operated pressure reducing valves , which can be used to reduce and maintain pressure in a certain circuit.

Technical specification



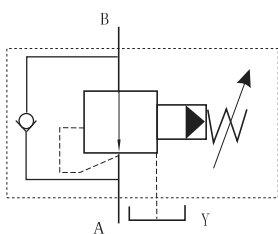
Model	DR-10	DR-20	DR-30
Max.flow rate (l/min)	150	300	400
Working pressure (MPa)	35		
Input pressure (MPa)	35		
Output pressure (MPa)	1 to 35		
Back pressure Y port (MPa)	35(Only used for without check valve)		
Weight(kgs)	3.4	5.3	8

Ordering details

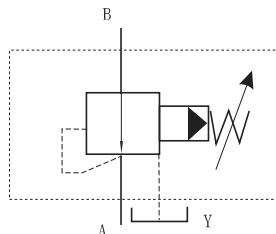
DR	10	1	6X	10	Y	M	V
Sort	Nominal size	Adjustment type	Series number	Pressure adjustment range	Oil control	With check valve	Seals
Pilot operated pressure reducing valve	10:NG10 20:NG20 30:NG30	1:Rotary knob 2:Sleeve with hexagon and protective cap 3:Lockable rotary knob with scale	6X:6X series	5:5MPa 10:10MPa 20:20MPa 31.5:31.5MPa 35:35MPa	Y:Internal control external drain XY:External control external drain	No code: Without check valve M: With check valve	No code: NBR seals for petroleum oils V: FPM seals for phosphate ester

Symbol list

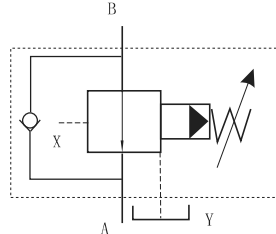
DR- *-Y-M



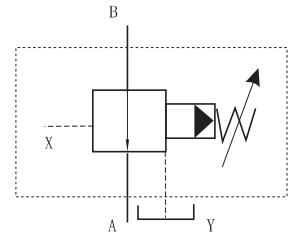
DR- *-Y



DR- *-XY-M



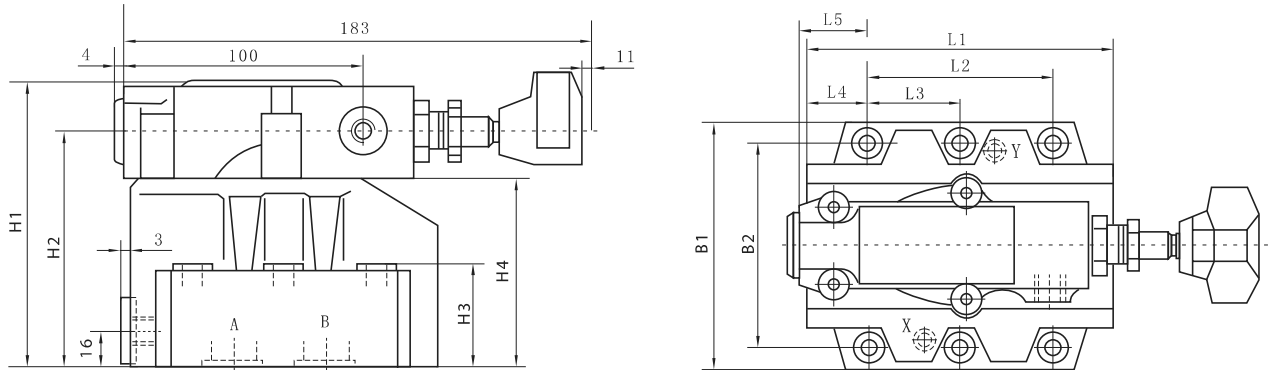
DR- *-XY



Dimensions

Unit: mm

DR-10/20/30



Model	B1	B2	H1	H2	H3	H4	L1	L2	L3	L4	L5
DR- 10	85	66.7	112	92	28	72	90	42.9	-	35.5	34.5
DR- 20	102	79.4	122	102	38	82	112	60.3	-	33.5	37
DR- 30	120	96.8	130	110	46	90	140	84.2	42.1	28	31.3

Mounting size

Unit: mm

DR-10

DR-20

DR-30

