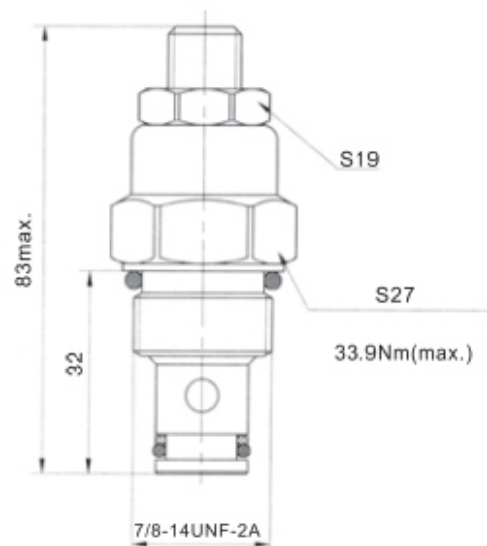


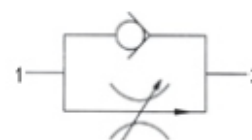
LTC08-00-00



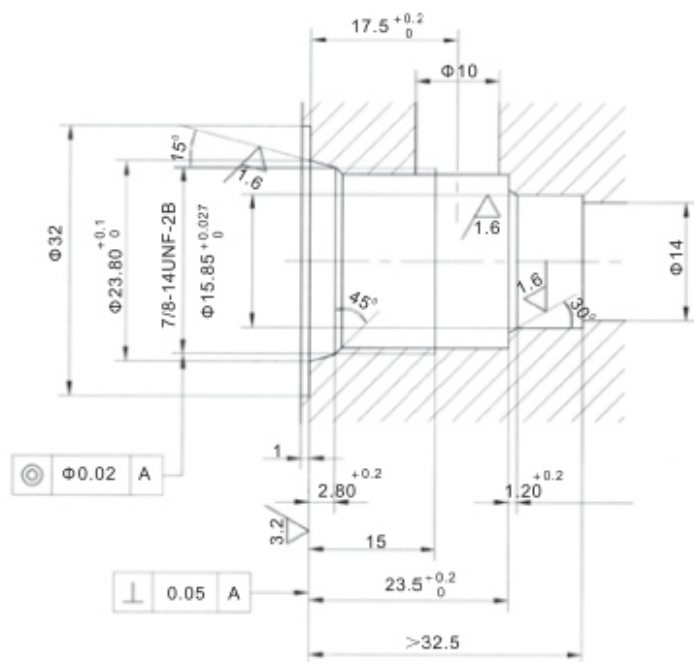
Technical specification

- Max. working pressure: 240bar
- Max. flow rate: 45l/min (13.5bar) open full
- Adjustment stroke: 3.5 turns (open full)
- Internal leakage: $\leq 0.3\text{ml/min}$ (closed)
- Operating temperature: $-30\sim+110^{\circ}\text{C}$
- Oil cleanliness: 25u m or better

Symbol



Cavity dimensions



Pressure drop-flow curve

32 cST Oil/45°C

P—T—
T—P—

