

MCS series modular balance valves can balance the pressure of one certain line in hydraulic system.

**Ordering details**

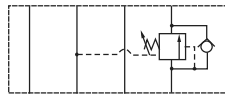


|                       |               |                      |   |   |             |
|-----------------------|---------------|----------------------|---|---|-------------|
| MCS                   | 02            | A                    | K   | 1                                       | 20          |
| Sort                  | Nominal size  | Pilot oil port       | Adjustment type                               | Pressure adjustment range               | Design code |
| Modular balance valve | 02:NG6 Cetop3 | A:A port<br>B:B port | No code: Without knob<br>K: With plastic knob | 1:8~70bar<br>2:35~140bar<br>3:70~250bar | 20          |

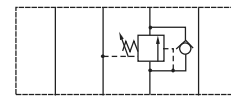
**Technical specification**

|                        |        |
|------------------------|--------|
| Model                  | MCS-02 |
| Max. flow rate (l/min) | 35     |
| Working pressure (MPa) | 25     |
| Weight(kgs)            | 1.5    |

**Symbol list**



MCS-02A



MCS-02B

**Dimensions**

Unit: mm

